



National Aeronautics and Space
Administration
Jet Propulsion Laboratory
California Institute of Technology



WSDC Status

WISE Operations MMR

IPAC/WSDS Weekly Status Report

R. Cutri, T. Conrow, J. Bauer, R. Beck,

D. Kirkpatrick, F. Masci, L. Yan



Multiframe (coadd) pipeline testing



- Testing/tuning of multi-frame pipeline to support preliminary release ongoing
- Analysis of impacts from SAA ongoing
- Artifact Identification (ARTID) analysis for coadds and software in progress
- Atlas Image coadds at a range of ecliptic latitudes were made to support ARTID and prelim release testing — PTO for example

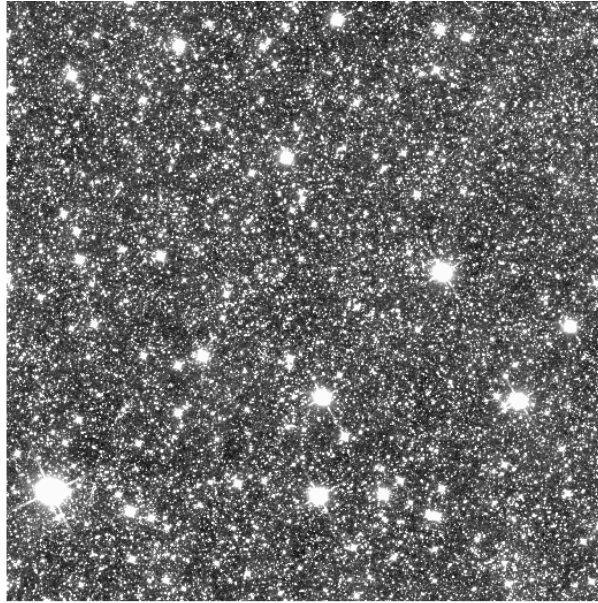


Atlas Images at $elat = 80^\circ$, $glat \sim 25^\circ$



WSDC Status

W1



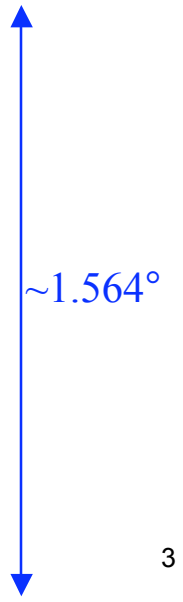
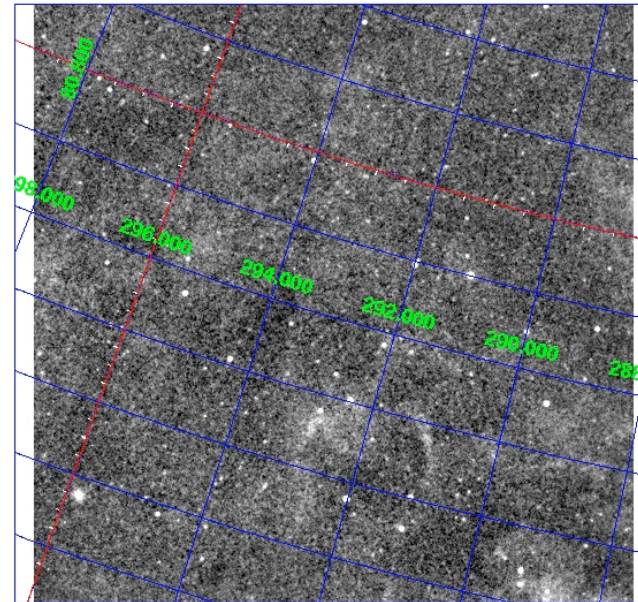
W2



W3



W4



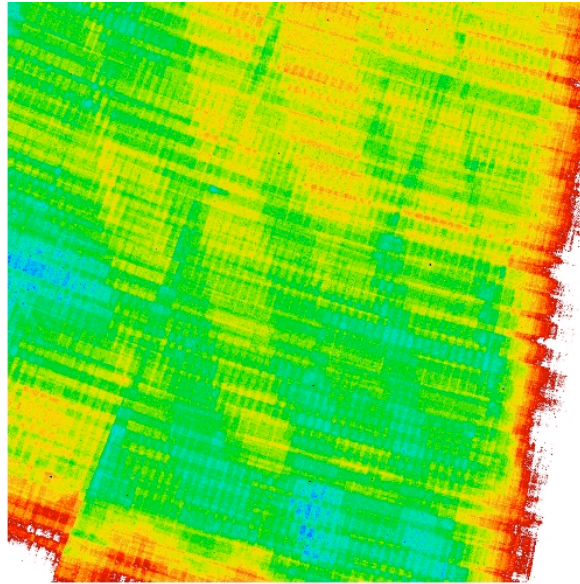


Depth-of-coverage maps for this example

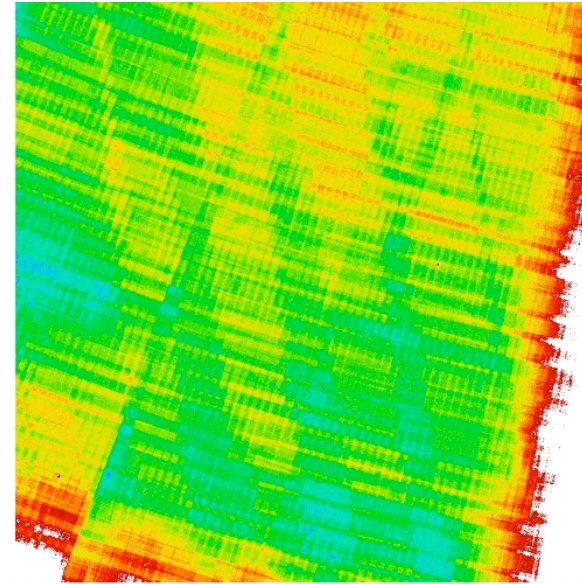


WSDC Status

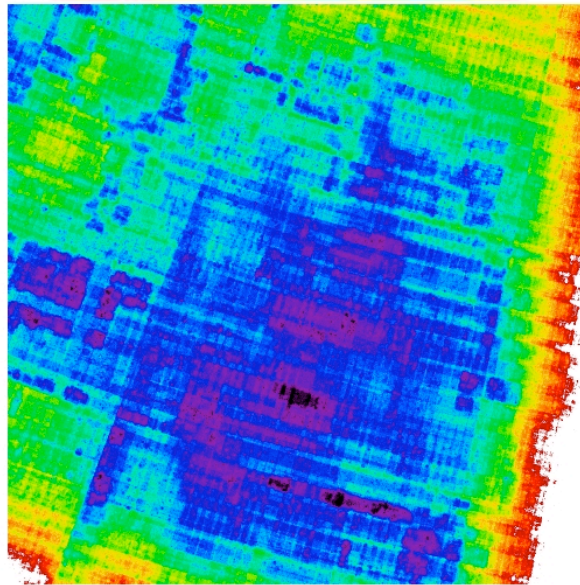
W1



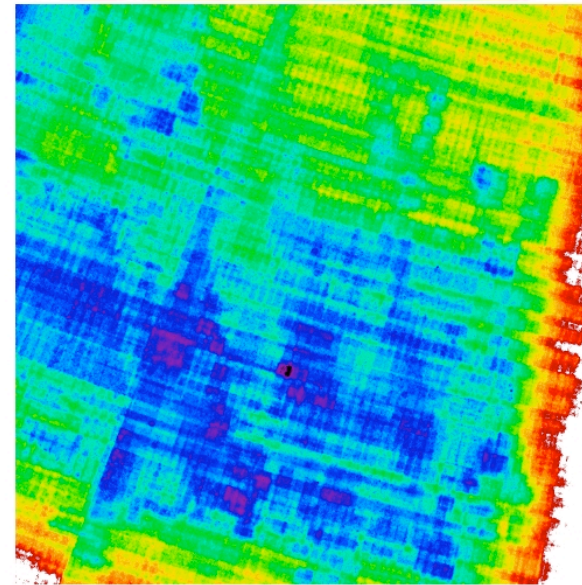
W2



W3



W4



Note: SAA frames and
“bad outlier” frames
rejected for each band:
0, 0, 31, 29
*** rejection criteria
not yet tuned.

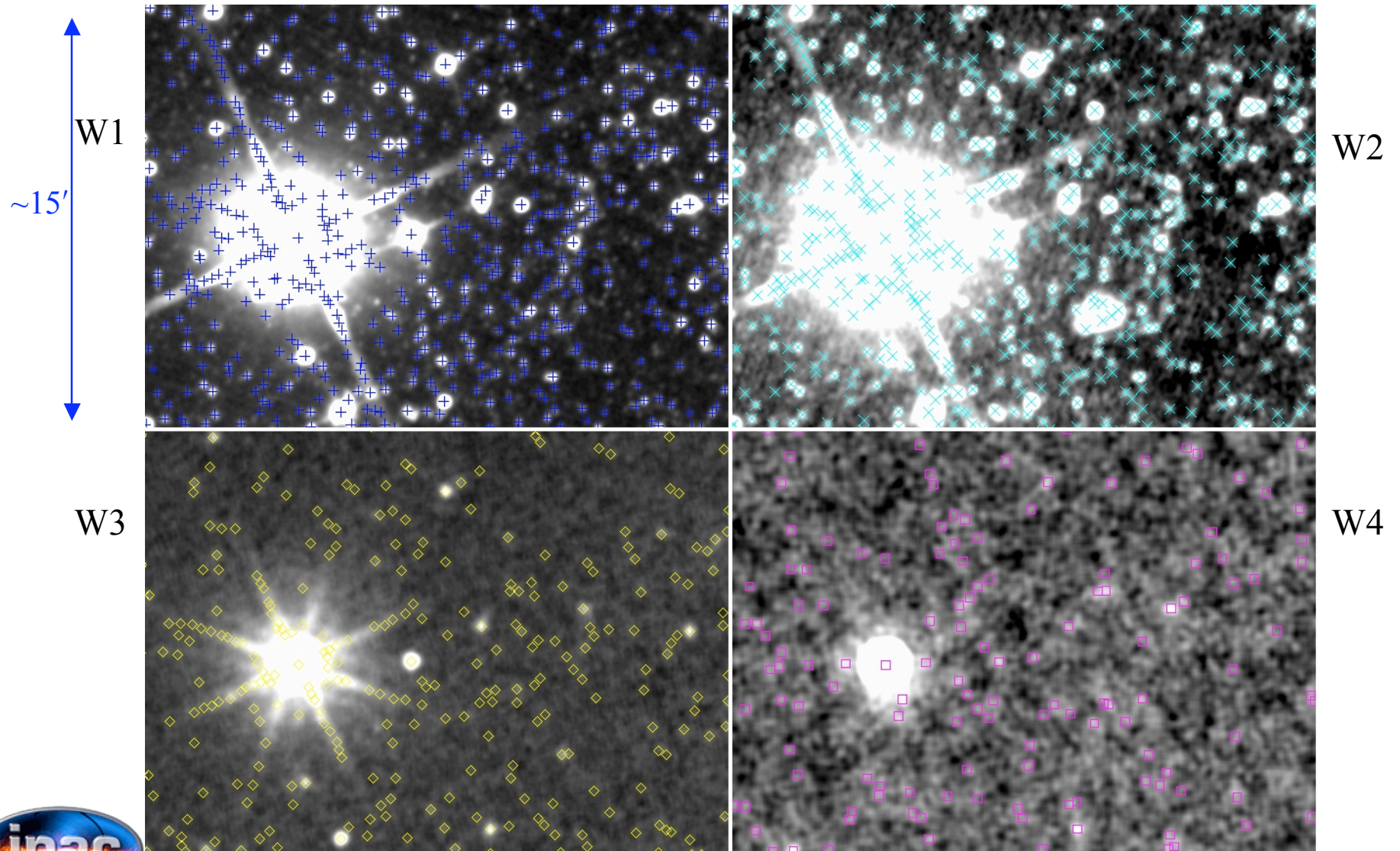




Overlaid source extraction in zoomed-in region (unfiltered)



WSDC Status

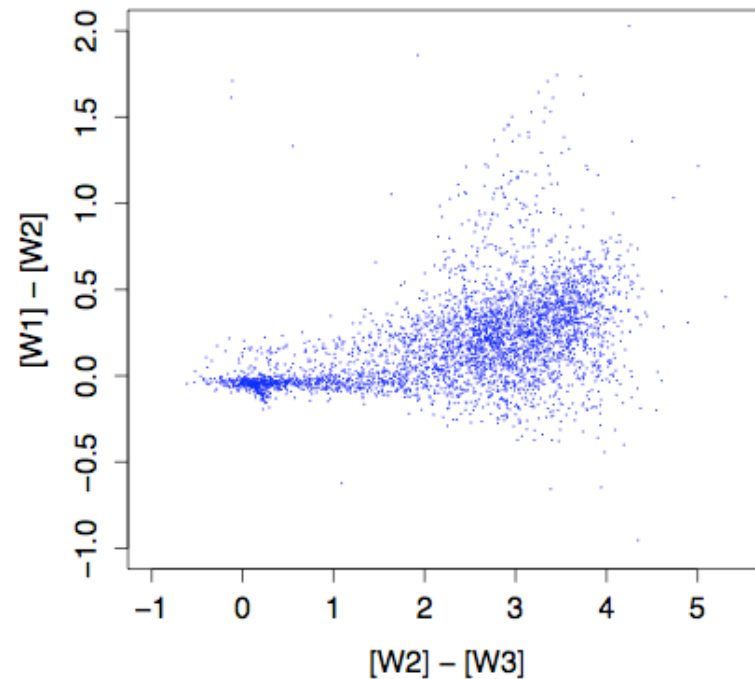
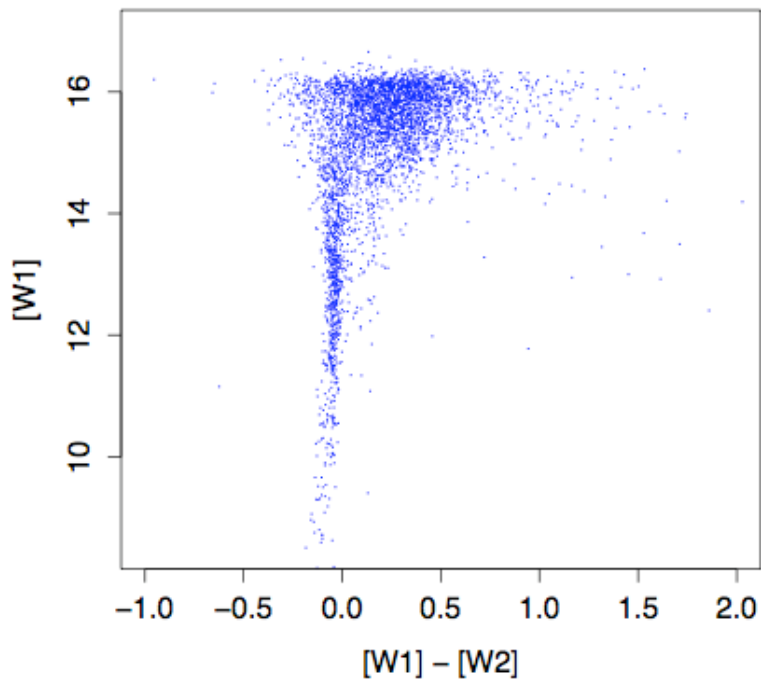




colors and mags for “clean” extractions in this footprint



N.B: “clean” \Rightarrow not blended; no upper limits; chi-squares from PSF-fits $\pm 20\%$ of unity;
 $S/N > 20$ in at least one of W1, W2, W3.



\Rightarrow consistent with expected colors of sources at this galactic lat (e.g., from IRAC)

