



National Aeronautics and Space
Administration
Jet Propulsion Laboratory
California Institute of Technology



WISE Operations MMR

IPAC/WSDS Weekly Status Report

R. Cutri, T. Conrow, J. Bauer, R. Beck,

D. Kirkpatrick, F. Masci, L. Yan



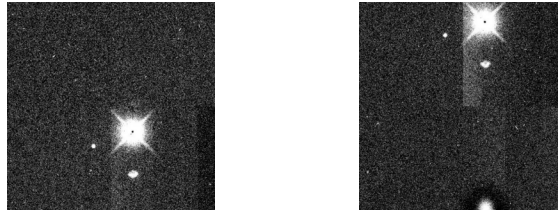


ICAL Status

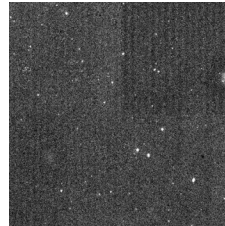


WSDC Status

- Validation of 3.5 products and further tuning to optimize droop corrections
- Lien list compiled [see: <http://wise2.ipac.caltech.edu/proj/fmasci/v3.5Liens.txt>]
- Some new anomalies:
 - Droop induced quadrant gradients in W3,W4. Slope is quad dependent e.g., Cat's Eye in touchstone field:



- Smeared frames coinciding with momentum dumps (torque-rod firing) at ends of scan ($\sim 45^\circ$ of pole). Sequence: ~ 5 consecutive smeared frames, then a gap of 3 good frames, followed by 3-4 smeared frames.
- Vertical stripe patterns in W3. Not apparent in early mission scans:



variation is $< \sim 0.6\%$ peak-to-peak, on scale of ~ 10 pixels,
phase (location) varies frame-to-frame,
appears additive.

- Sporadic W2 checker-board pattern more prevalent in data acquired over past 3 weeks (output #11):

