



National Aeronautics and Space
Administration
Jet Propulsion Laboratory
California Institute of Technology



WISE Operations MMR

IPAC/WSDS Weekly Status Report

R. Cutri, T. Conrow, J. Bauer, R. Beck,
D. Kirkpatrick, F. Masci, L. Yan



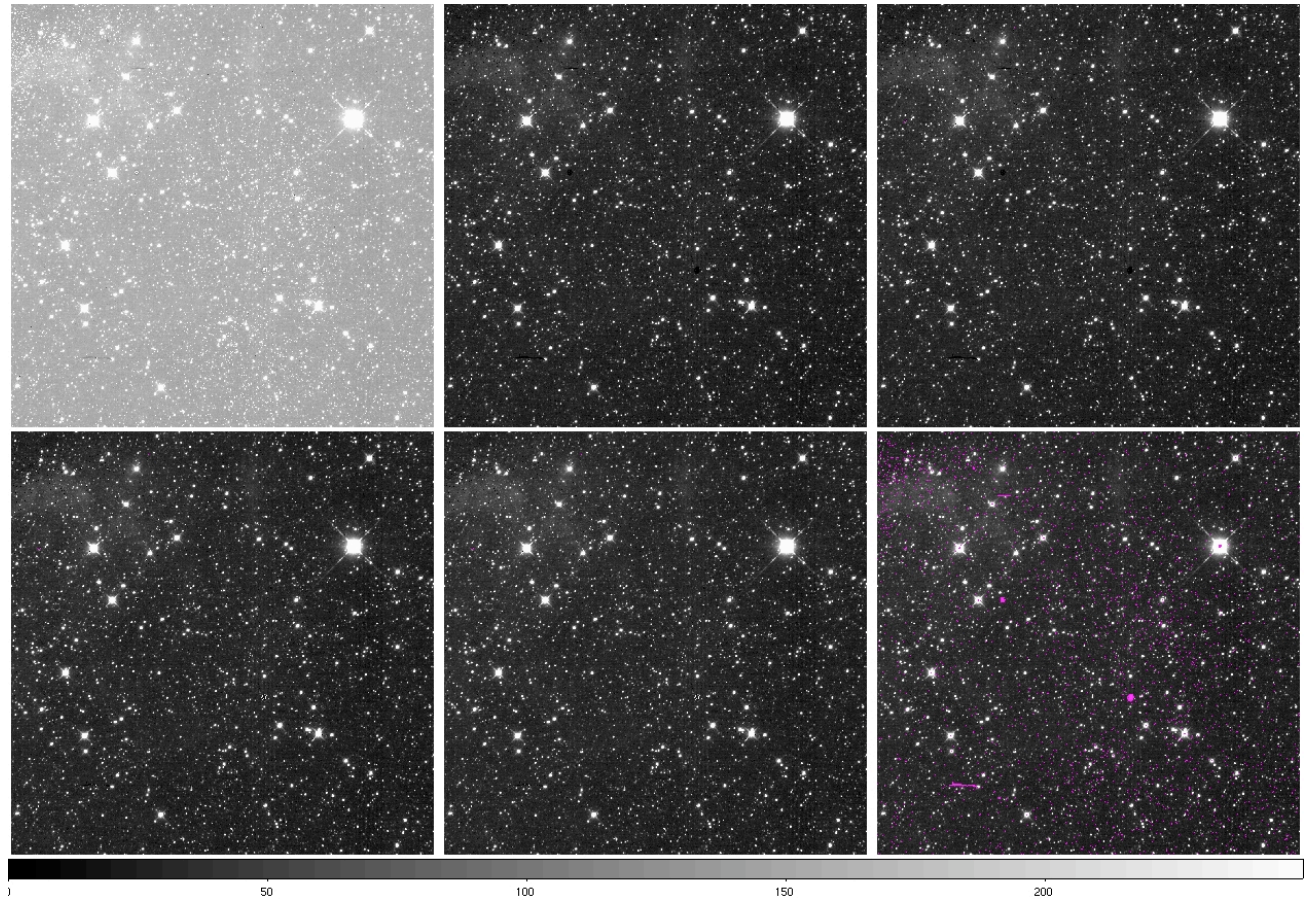


v3.5 Ical Pipeline Flow (W1)



WSDC Status

L0	darksub	linearized
flattened	skycorr	NaN'd pix(L1b)



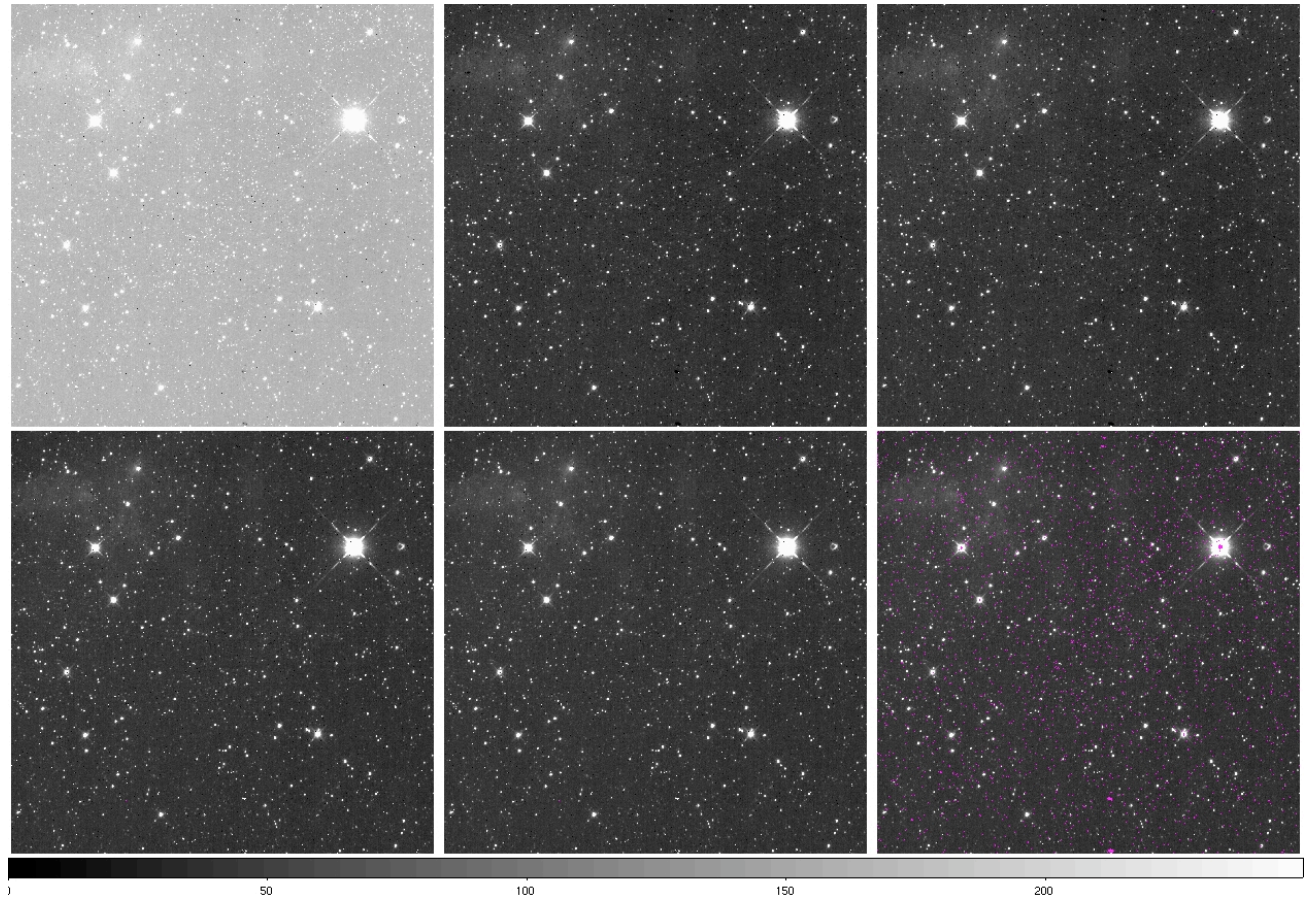


v3.5 Ical Pipeline Flow (W2)



WSDC Status

L0	darksub	linearized
flattened	skycorr	NaN'd pix(L1b)



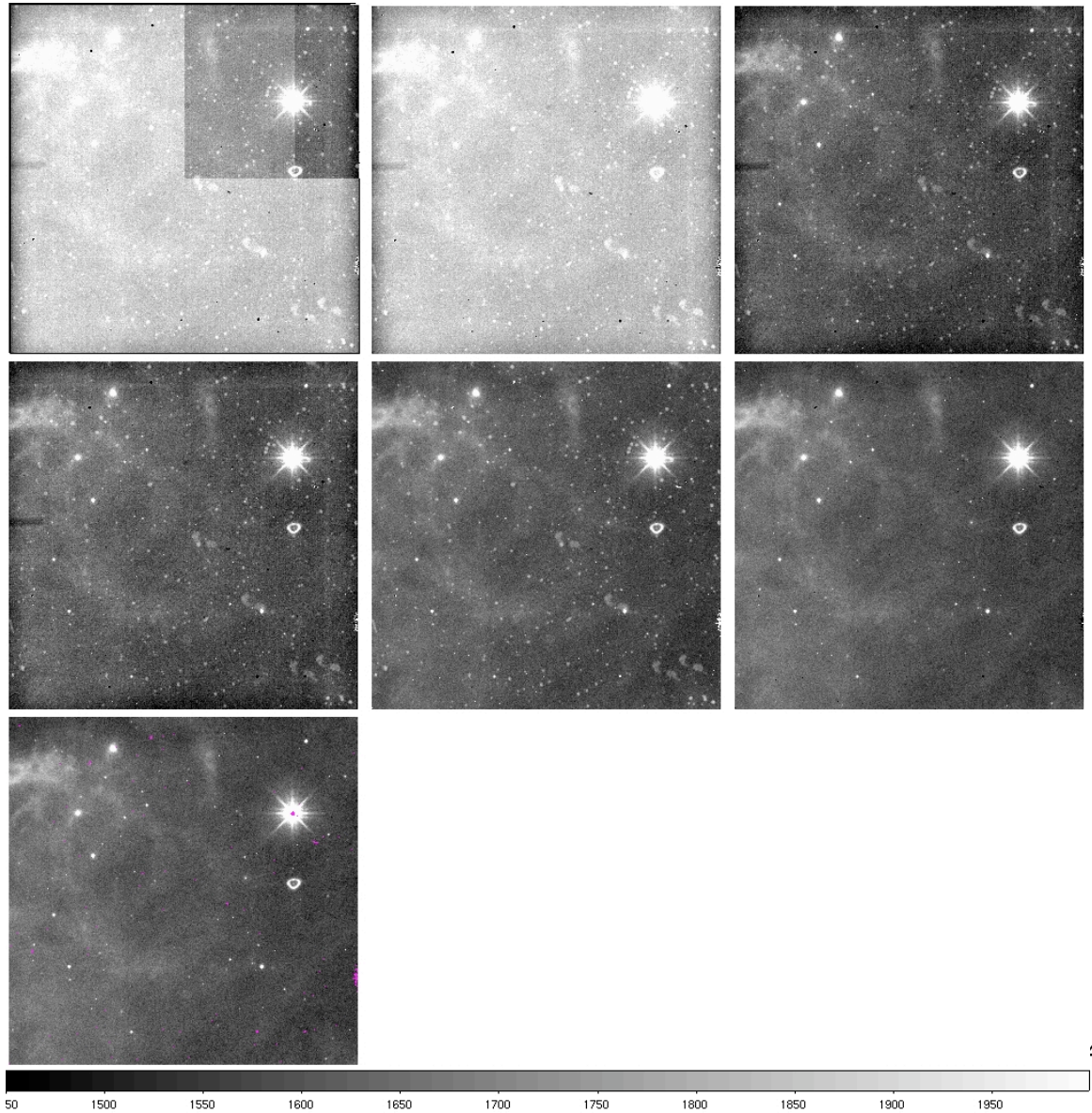


v3.5 Ical Pipeline Flow (W3)



WSDC Status

L0	droop-corr	darksub
linearized	flattened	skycorr
NaN'd pix (L1b)		



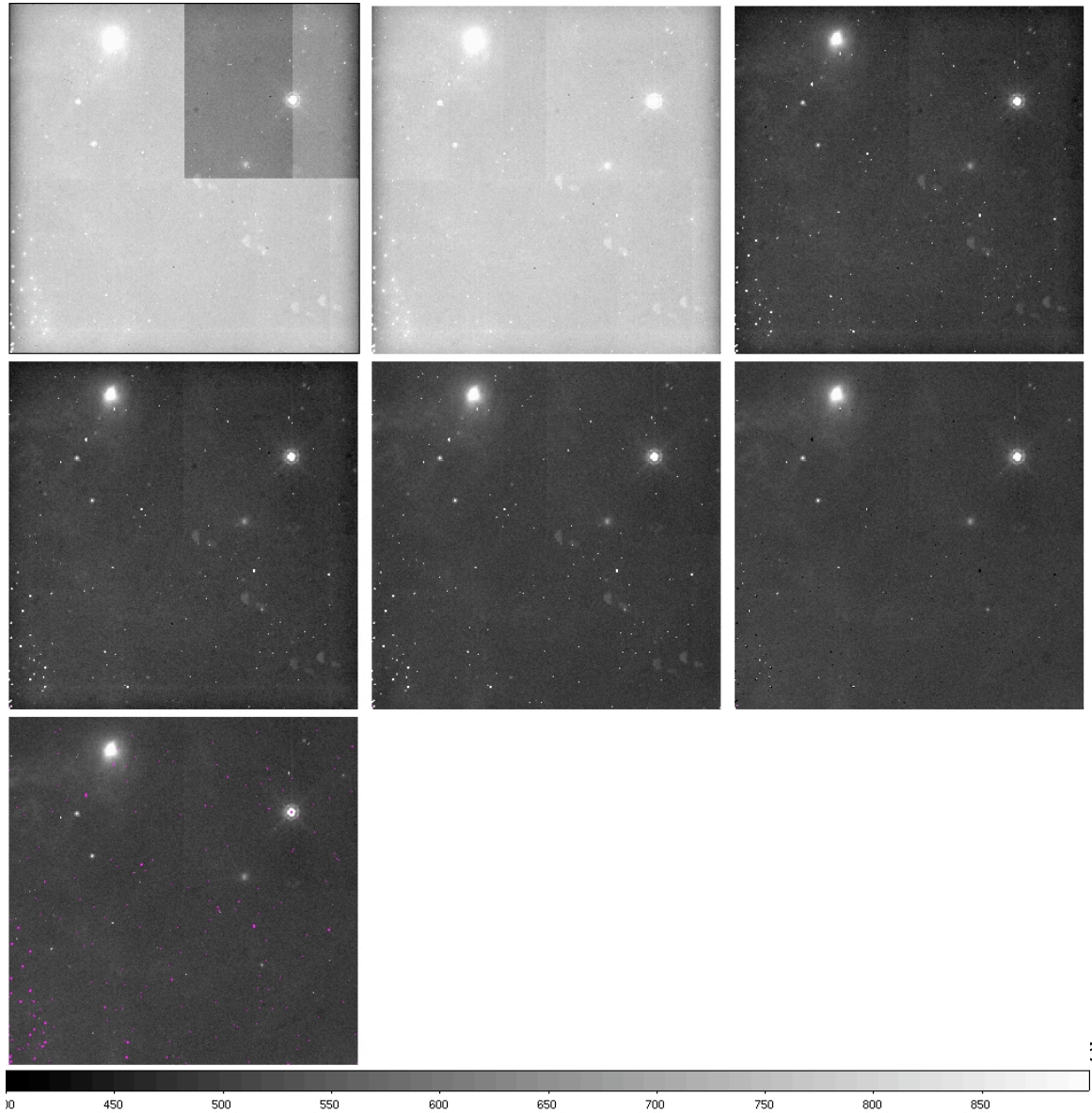


v3.5 Ical Pipeline Flow (W4)



WSDC Status

L0	droop-corr	darksub
linearized	flattened	skycorr
NaN'd pix (L1b)		

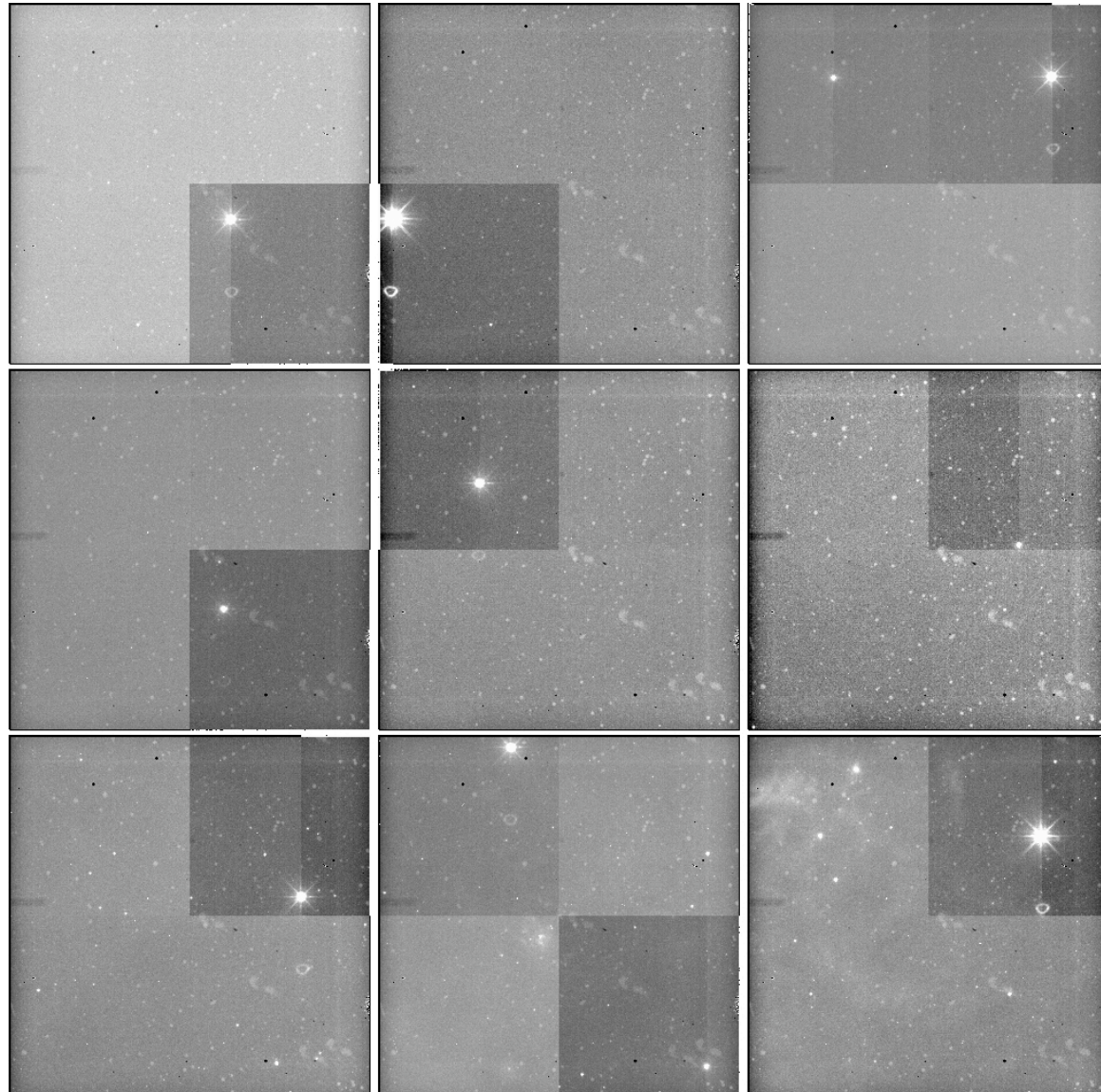




W3 split-droop examples (Level 0)



From v3.5 test-bed
PTO for L1b's

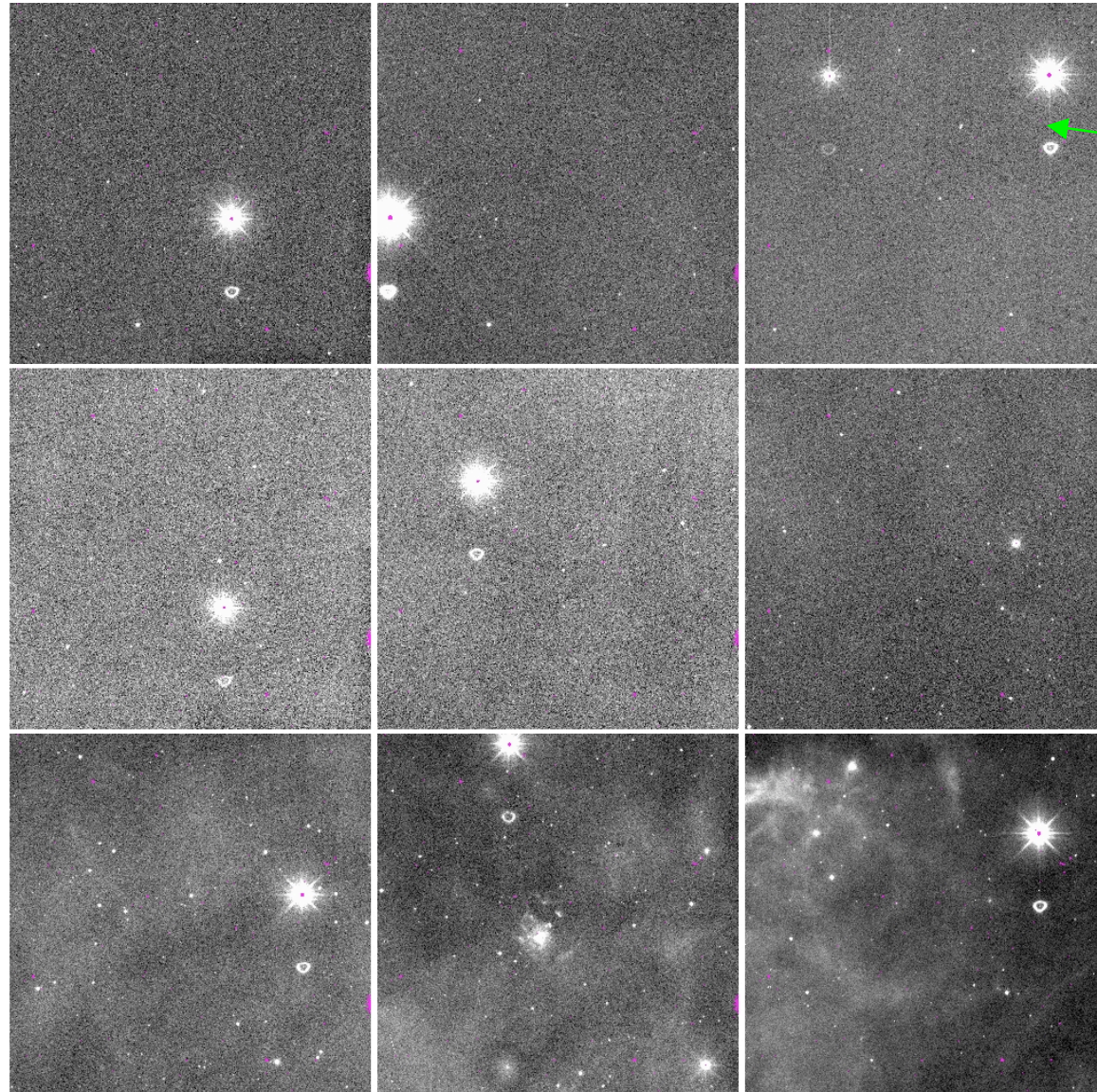




W3 split-droop corrected (Level 1b)



From v3.5 test-bed:
success rate (no visible
residuals): ~90%



residual

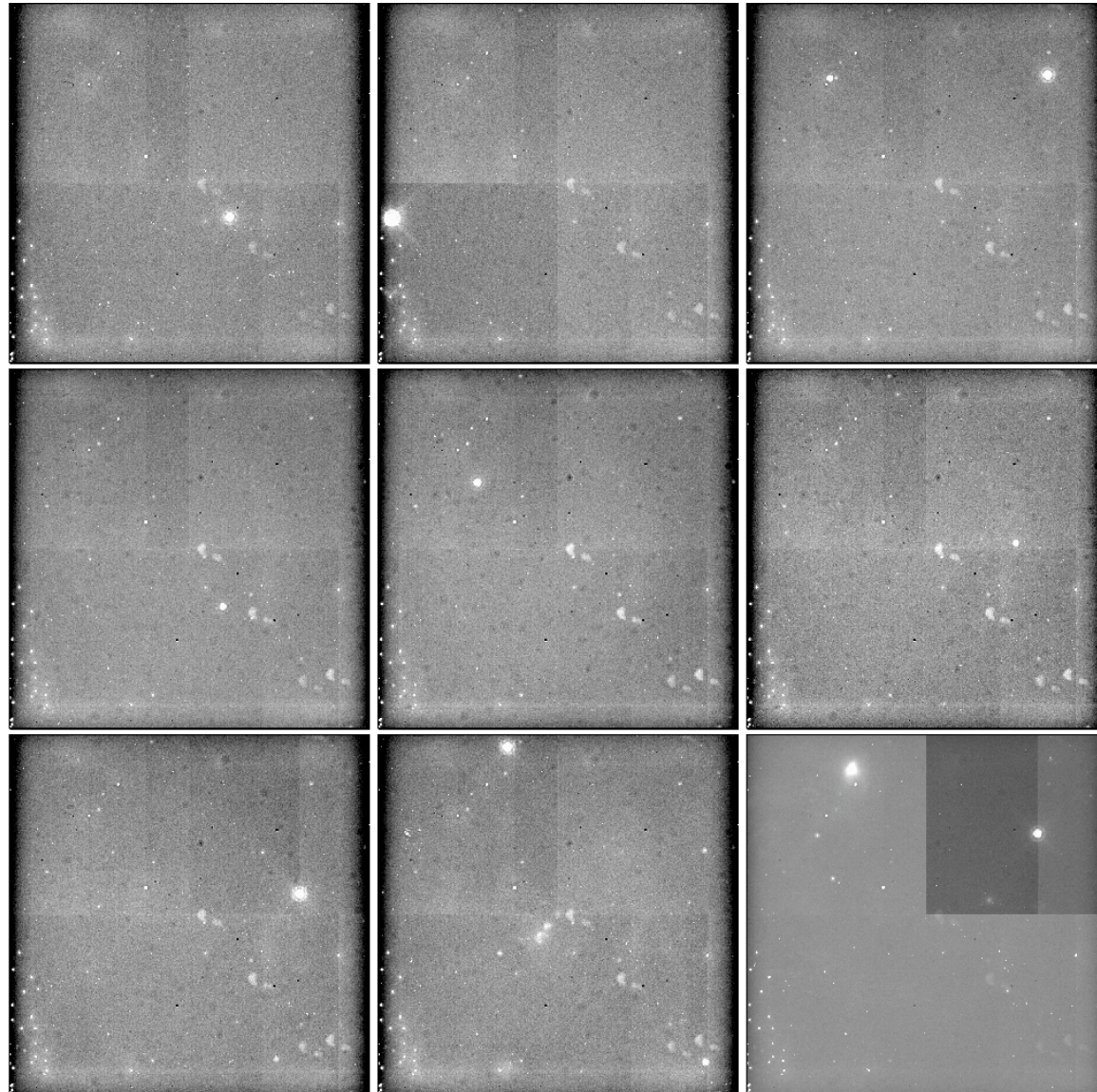




W4 split-droop examples (Level 0)



From v3.5 test-bed
PTO for L1b's

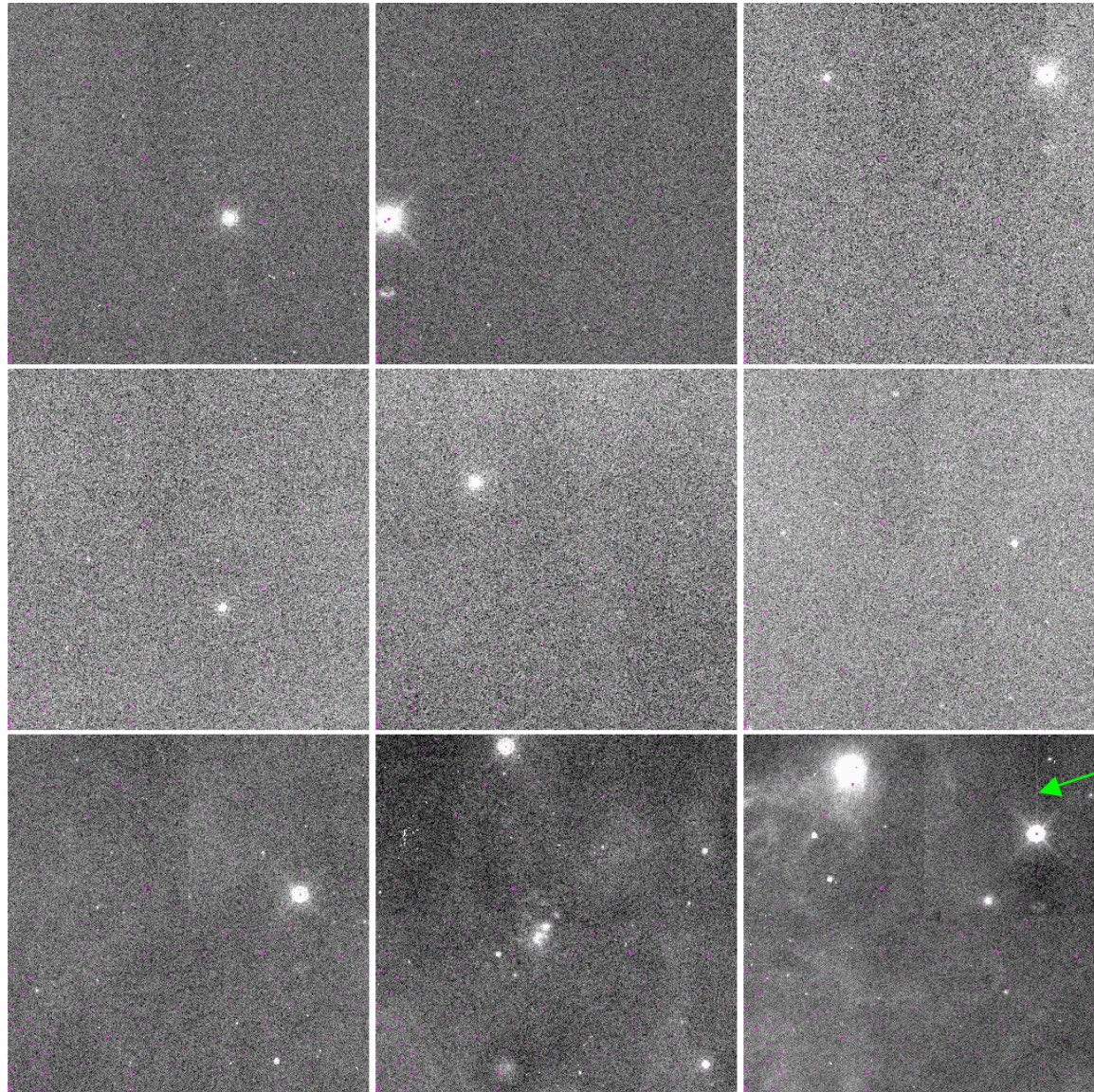




W4 split-droop corrected (Level 1b)



From v3.5 testbed:
success rate (no visible
residuals): ~94%



residual

